



PRODUCT USE GUIDE

QUICK INSTALLATION GUIDE

M115

4000 DPI GAMING MOUSE

TECH SPECS

Sensor: Optical
DPI: 800-1600-2400-4000
Buttons: 6 (programmable)
Switch rating: 3 million clicks
Backlight: 7 colors
Interface: USB 2.0
Cable length: 1.5 m
OS support: Windows 7 or newer

www.marvo-tech.com

QUICK INSTALLATION GUIDE

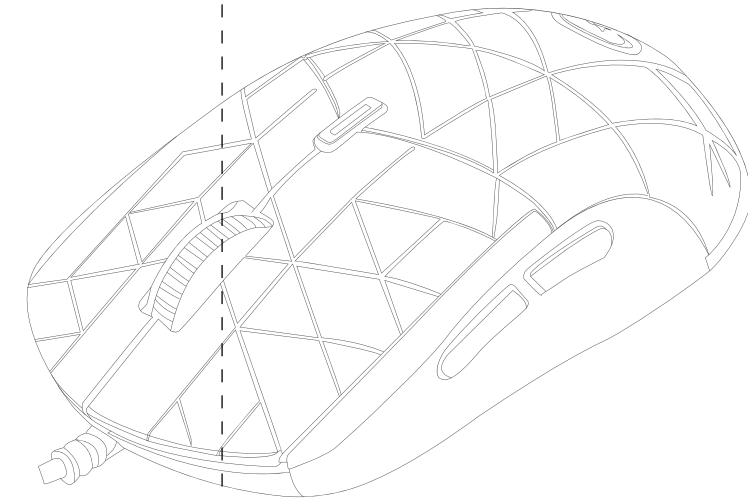
PRODUCT PRESENTATION

1. FEATURES

- High-profile design with optimum palm support
- Rubber scroll wheel for enhanced precision
- 7-color backlight with breathing effect
- Instantly adjust and improve your aiming precision with a press of a button at your fingertip

2. SYSTEM REQUIREMENTS

PC system or compatible with one USB port available, Windows 7 or newer operating system.



QUICK INSTALLATION GUIDE

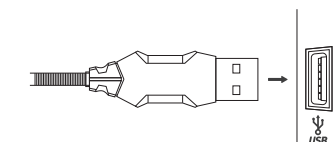
QUICK INSTALLATION GUIDE

SAFETY NOTES

- Keep the equipment dry. Keep away from precipitation, humidity, all types of liquids and condensation.
- Do not use the product with wet hands.
- Do not use or store the equipment in dusty or dirty areas.
- Do not store the equipment under high-temperature or low-temperature conditions (this may damage it).
- Do not drop, knock or shake the equipment as it may damage it.

INSTALLATION

Connect the mouse to an available USB port on your computer. When connecting for the first time, wait 15 seconds until the generic driver is installed.

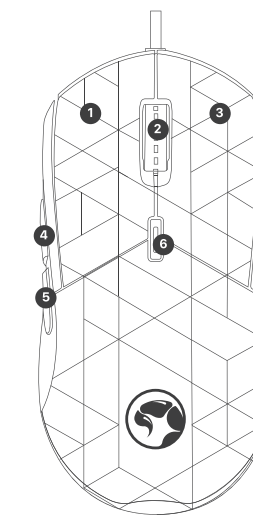


For advanced mouse configuration, please download and install the specialized driver at www.marvo-tech.com (an Internet connection is required):
- download the driver and double-click the executable file;
- follow the on-screen instructions and install the application;
- after installing the application successfully, an icon will be displayed in the taskbar;
- double-click this icon to launch the application.

QUICK INSTALLATION GUIDE

USE

MOUSE
Press the buttons below the scroll wheel to change the sensitivity according to predefined DPI steps.



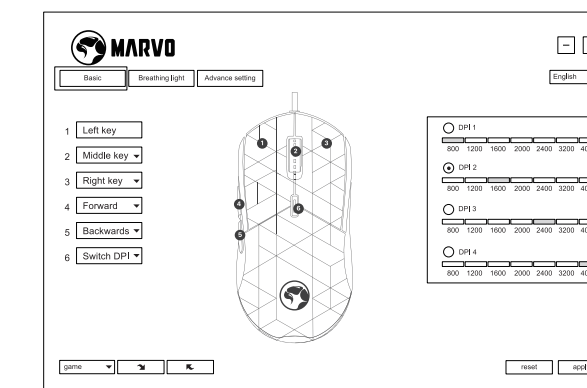
- 1: Left key
- 2: Middle key
- 3: Right key
- 4: Forward
- 5: Backwards
- 6: Switch DPI

QUICK INSTALLATION GUIDE

MOUSE DRIVER USE

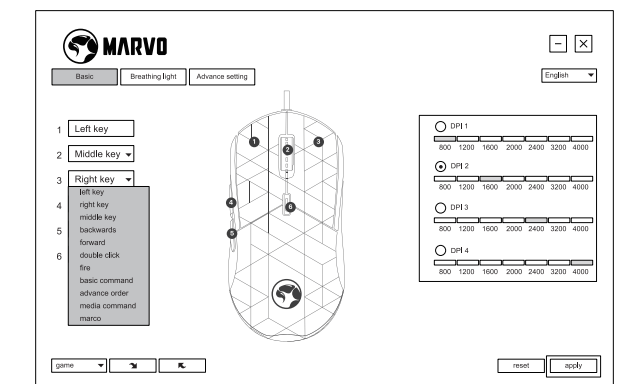
Key Setting

Select "Basic" tab and set user-defined function of each key as following graph. 1 for Left Click, 2 for Middle Click, 3 for Right click, 4 for forward, 5 for backwards, 6 for switch DPI is kept as default.



QUICK INSTALLATION GUIDE

One click the key you want to set then choose a new functions. Click "Apply" to save the setting.

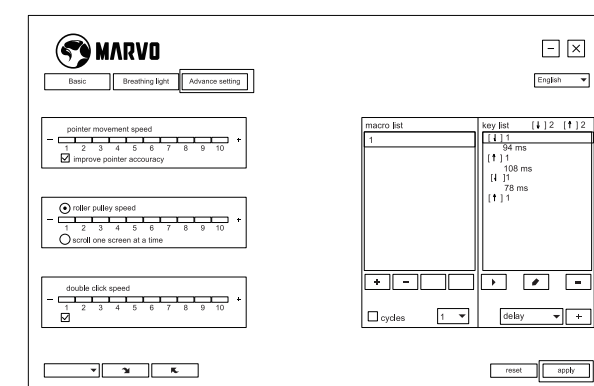


www.marvo-tech.com

QUICK INSTALLATION GUIDE

Advanced Setting

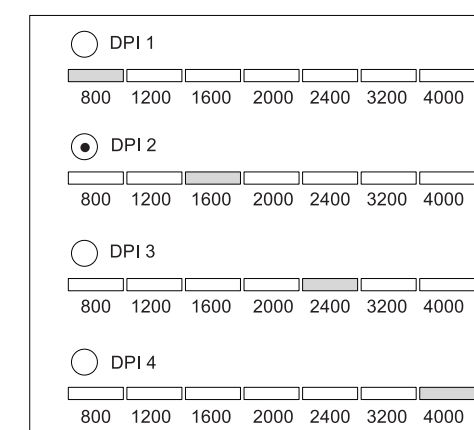
Select "Advanced" tab and set Pointer movement speed/Roller pulley speed/Double click speed functions as following graph. Click "Apply" to save the setting.



QUICK INSTALLATION GUIDE

DPI Setting

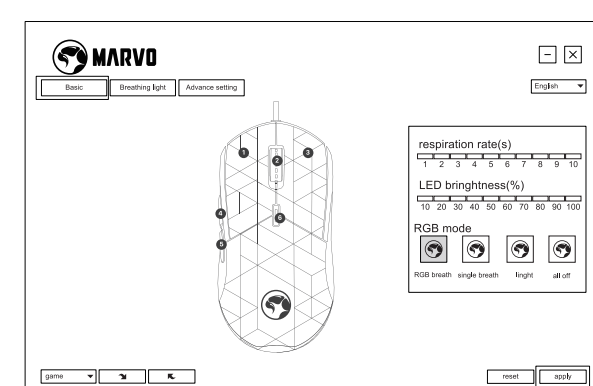
The default DPI: 800-1600-2400-4000, you can set the DPI from 800-4000.



QUICK INSTALLATION GUIDE

Light Setting

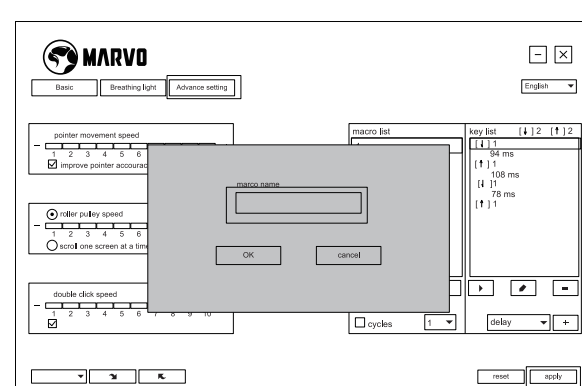
Select "Breathing light" tab and set Respiration rate/LED brightness/RGB mode functions as following graph. Click "Apply" to save the setting.



QUICK INSTALLATION GUIDE

Macro Setting

Macro management can record any keys of keyboard, the time of keys reaction and the number of keys cycles. Click "+" button to create a new file, such as a, b, c



QUICK INSTALLATION GUIDE

Click "Recording" and start recording any keys of keyboard. The keys you recorded will display in the macro edit box. After the recording, click "Recording" again to finish.

After recording is completed, just exit the macro recording interface, no need to click the confirmation keys.

Execute a macro, such as the mouse button "4" key set to "macro functions", after recording is complete, press the mouse "4" key to play the recorded content.

QUICK INSTALLATION GUIDE

TROUBLESHOOTING

In case of incorrect operation follow the steps below:

- Check the integrity of the connectors;
 - Check the connection to the computer;
 - Check your computer settings;
 - Disconnect and reconnect the equipment; restart the computer.
- If the problem persists, please contact your local seller.

GENERAL INFORMATION

- Unauthorized repairs or disassembly of the product will void the warranty and may cause its damage.
- This product is safe and complies to EU requirements.
- This product is manufactured conforming with the European RoHS standard. This standard was introduced to reduce the amount of electrical and electronic waste emitted into the atmosphere.
- Using the WEEE symbol (the crossed-out bin) indicates that the electrical and electronic equipment inside the package can be recycled. When recycling waste properly, you protect the environment and people health. Segregated household waste collection, aids recycle materials and components used for the production of this device. For detailed information about recycling, please contact your retailer or a local authority.

QUICK INSTALLATION GUIDE

Warranty Card

Product Model: _____

Product Serial No: _____

Date of Purchase: _____

Customer Name: _____

TEL: _____

Address: _____

Distributor Name: _____

TEL: _____

Warranty Card is the important certificate for after-sale service of Marvo products, please keep it safe.

www.marvo-tech.com

BORN FOR GAMING



FACEBOOK Scan Me



WIKI Scan Me