

SPS SOHO+

Line-interactive UPS 500 VA - 2200 VA with dual USB charger

SPS SOHO+: Optimum electrical protection for office environments and systems

Salicru's **SPS SOHO+** series UPS systems stand out for their Line-interactive technology, compatibility with APFC (active power factor correction) loads and their dual USB charger on the front – all in a power range from 500 to 2,200 VA and versions with Schuko or IEC sockets.

Line-interactive systems use AVR (buck-boost) automatic voltage regulators to reduce possible fluctuations in input voltage, thereby lowering battery use, extending battery life and providing maximum backup if necessary.

They also feature a USB interface with HID protocol for control, parameter setting and computer shutdown/hibernation. Also available is a software package for the management and monitoring of associated environments, including virtualised systems.

The range consists of models with the following power ratings: 500, 650, 850, 1,200, 1,600 and 2,200 VA.



Applications: Electrical security when doing business

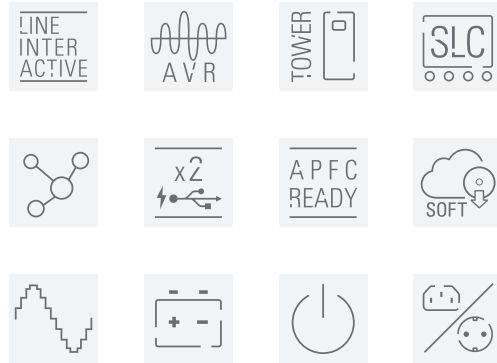
Salicru's **SPS SOHO+** series UPS systems are ideal for the protection of computer/office environments from single-user management, design or communications stations to small networks composed of one server, various workstations and all associated peripherals. At the same time, they allow the charging of mobile devices through the two built-in USB ports. They are therefore suitable for shops, self-employed professionals, small offices, franchises, dealers, etc.



SALICRU

Performances

- Line-interactive technology.
- Dual USB charger on the front (max. 2 Amp).
- Compatible with APFC (active power factor correction) loads.
- Complete LCD display with all information.
- Permanent stabilisation (AVR).
- USB communication interface with HID protocol.
- Monitoring software for Windows, Linux and Mac.
- Schuko or IEC sockets available.
- Resettable input thermal protection.
- Cold start function for start-up without mains.
- Automatic restart when power restored.
- Automatic frequency detector 50 or 60 Hz.
- Protection against overloads and short circuits.
- SLC Greenenergy solution.



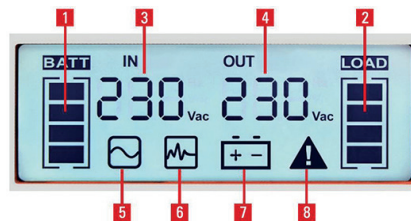
USB interface with HID protocol

- Parameter configuration, UPS control and computer shutdown/hibernation through the USB port.
- Available for Windows, Linux and Mac environments.



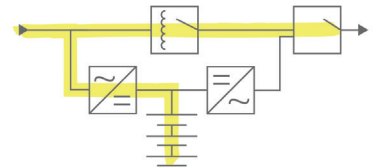
Display

1. Battery level available (25-50-75-100% and end of backup).
2. Connected load level (25-50-75-100% and overload).
3. Input voltage.
4. Output voltage.
5. Normal operation.
6. AVR operation (stabilisation).
7. Battery operation (power cut CA).
8. Device fault.



Line-interactive technology

Ideal for office environments. It combines Off-line technology with an internal voltage stabiliser for better compensation of the voltage fluctuations and to avoid a greater use of the batteries and so prolong their life time.



Dual USB charger on the front

They allow the charging of mobile devices through the two built-in USB ports.



Range

MODEL SCHUKO	CODE	POWER (VA / W)	NO. OF SOCKETS	DIMENSIONS (D × W × H mm)	WEIGHT (Kg)
SPS 500 SOHO+	647CA000001	500 / 300	2	290 × 100 × 143	4.4
SPS 650 SOHO+	647CA000002	650 / 360	2	290 × 100 × 143	4.4
SPS 850 SOHO+	647CA000003	850 / 480	2	290 × 100 × 143	5.2
SPS 1200 SOHO+	647CA000004	1200 / 720	4	364 × 139 × 195	10.4
SPS 1600 SOHO+	647CA000005	1600 / 960	4	364 × 139 × 195	10.7
SPS 2200 SOHO+	647CA000006	2200 / 1200	4	364 × 139 × 195	11

MODEL IEC	CODE	POWER (VA / W)	NO. OF SOCKETS	DIMENSIONS (D × W × H mm)	WEIGHT (Kg)
SPS 500 SOHO+ IEC	647CA000007	500 / 300	3 batt + 1 prot	290 × 100 × 143	4.4
SPS 650 SOHO+ IEC	647CA000008	650 / 360	3 batt + 1 prot	290 × 100 × 143	4.4
SPS 850 SOHO+ IEC	647CA000009	850 / 480	3 batt + 1 prot	290 × 100 × 143	5.2
SPS 1200 SOHO+ IEC	647CA000010	1200 / 720	4 batt + 2 prot	364 × 139 × 195	10.4
SPS 1600 SOHO+ IEC	647CA000011	1600 / 960	4 batt + 2 prot	364 × 139 × 195	10.7
SPS 2200 SOHO+ IEC	647CA000012	2200 / 1200	4 batt + 2 prot	364 × 139 × 195	11

Dimensions

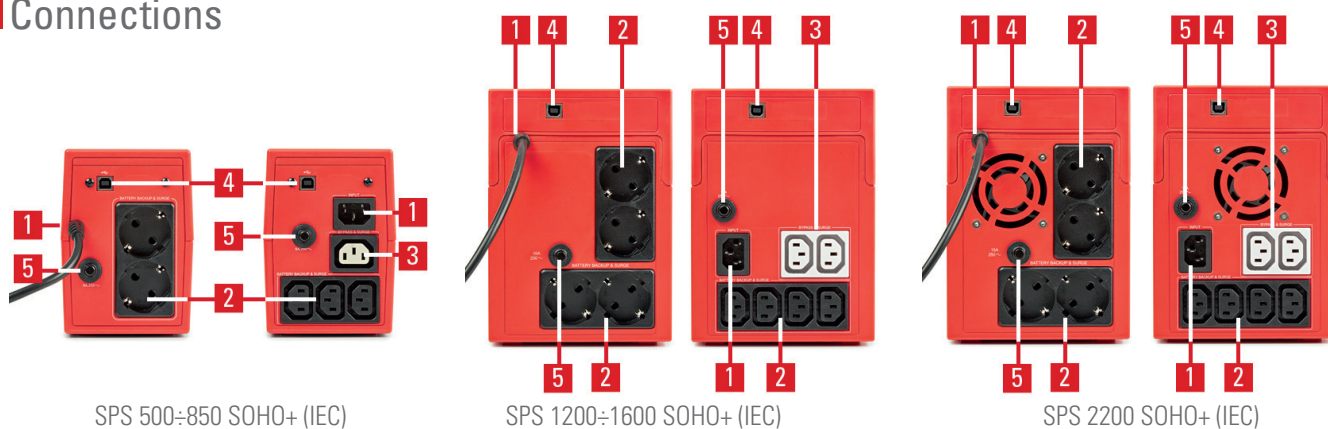


SPS 500-850 SOHO+ (IEC)



SPS 1200-2200 SOHO+ (IEC)

Connections



SPS 500-850 SOHO+ (IEC)

SPS 1200-1600 SOHO+ (IEC)

SPS 2200 SOHO+ (IEC)

1. AC input.
2. UPS sockets.
3. Sockets with surge protection.
4. USB port.
5. Thermal rearmable input.

Technical specifications

MODEL		SPS SOHO+
TECHNOLOGY		Line - interactive
FORMAT		Tower
INPUT	Rated voltage	230 V
	Voltage range	162 ÷ 290 V
	Stabiliser	AVR (Buck & Boost)
	Rated frequency	50 / 60 Hz (auto-detection)
	Protection	Resettable thermal cutoff
OUTPUT	Rated voltage	230 V
	Voltage accuracy (battery mode)	±10%
	Waveform (battery mode)	Pseudo sine wave
	Frequency	50 / 60 Hz (auto-detection)
	Frequency accuracy (battery mode)	±1Hz
	Compatibility with APFC loads	Yes
	Socket type	Schuko or IEC
BATTERY	Protection	Against deep discharge, against short circuit by means of fuse
	Battery type	Pb-Ca sealed, AGM, maintenance-free
	Recharge time	2-4 hours to 90%
COMMUNICATION	Ports	USB (HID protocol)
	Monitoring software	For Windows, Linux and Mac
INDICATIONS	Type	LCD
	Values	Input and output voltage / Input and output frequency / Battery voltage / % of load
	Levels	Connected load / Overload / Battery / Low battery
	Operating modes	Normal / Stabilisation (AVR) / Battery / Fault
OTHER FUNCTIONS	Cold start (start-up from batteries)	Yes
	Automatic restart	Yes, after end of backup
USB CHARGER	Quantity	2 ports
	Voltage	5 Vdc
	Maximum current	2,0 A
GENERAL	Operating temperature	0° C ÷ +40° C
	Relative humidity	Up to 95%, non-condensing
	Maximum operating altitude	2400 m.a.s.l.
	Acoustic noise at 1 metre	<40 dB ⁽¹⁾
STANDARDS	Safety	EN-IEC 62040-1
	Electromagnetic compatibility (EMC)	EN-62040-2
	Operation	EN-62040-3
	Quality and environmental management	ISO 9001 & ISO 14001

(1) <45 dB for 1600 and 2200 VA models

Information subject to change without notice.



@salicru_en



www.linkedin.com/company/salicruen/

+34 938 482 400 WWW.SALICRU.COM

AVDA. DE LA SERRA 100 · 08460 PALAUTORDERA · SPAIN · FAX +34 93 848 11 51 · salicru@salicru.com

SALICRU