

SPS ADVANCE T

Line-interactive sine-wave UPS tower 850 VA to 3000 VA

SPS ADVANCE T: Reliable protection in tower format for computer rooms

Salicru's **SPS ADVANCE T** series offers, as a UPS solution, optimum levels of efficiency and reliability for all critical devices that require power supply continuity and dependability. They come in a very compact tower format to save space in server and computer rooms. They also feature line-interactive technology to combat any fluctuations in the mains supply together with an output voltage that is always sine-wave, the highest quality possible to power all sensitive loads.

For easier and more convenient use, they feature a display that shows all necessary information on the operation of the device and power supply (input/output voltage, % load, % battery, etc.) and a wide range of communication options through the USB interface with HID protocol, monitoring and management software (downloadable) and integrated smart slot (SNMP).

Also noteworthy is their compatibility with current APFC (active power factor correction) power supplies.

The power range for the **SPS ADVANCE T** series is: 850, 1,000, 1,500, 2,000 and 3,000 VA.



Applications: Reliable electrical backup with high availability

Salicru's **SPS ADVANCE T** series UPSs provide an optimum combination of features to protect all computer room equipment, from entry-level servers, through routers, switches, hubs, network devices and access points, to backup systems.



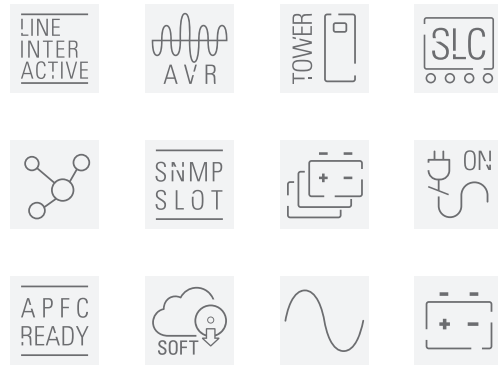
SALICRU
SMART
SOLUTIONS

SALICRU

Performances

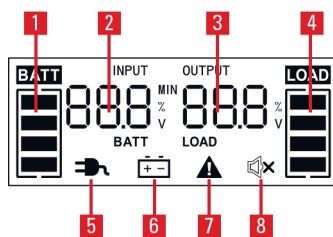
- Line-interactive technology with sine-wave output.
- Permanent AVR stabilisation (buck-boost).
- Compact tower format.
- RS-232 and USB-HID communication interfaces.
- Monitoring and management software for Windows, Linux and Mac.
- Smart slot for SNMP adapter.
- Compatible with APFC power supplies.
- Possibility of backup extension.⁽¹⁾
- Complete display showing all operating information.
- IEC output sockets.
- Automatic battery test on each start-up.
- Cold-start function for start-up from batteries.
- SLC Greenery solution.

(1) Through additional modules, except for 850 VA model.



Display

1. Level of battery available.
2. Values for input/battery/backup.
3. Values for output/charging.
4. Level of load connected.
5. Normal operation.
6. Battery operation (power cut).
7. Device fault.
8. Audible alarm and alarm cancellation.



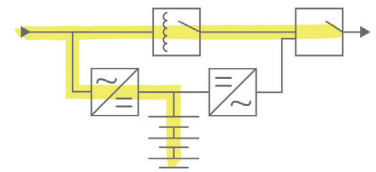
Communications

- USB interface with HID protocol: Parameter configuration, UPS control and computer shutdown/hibernation through the USB port. Available for Windows, Linux and Mac.
- UPS management and monitoring software for closing files/applications for Windows, Linux, Unix and Mac. Free and downloadable from www.salicru.com.
- Smart slot for the connection of SNMP environment integration cards and signal cards via potential-free contacts or Modbus protocol.



Line-interactive technology

Ideal for office environments. It combines Off-line technology with an internal voltage stabiliser for better compensation of the voltage fluctuations and to avoid a greater use of the batteries and so prolong their life time.

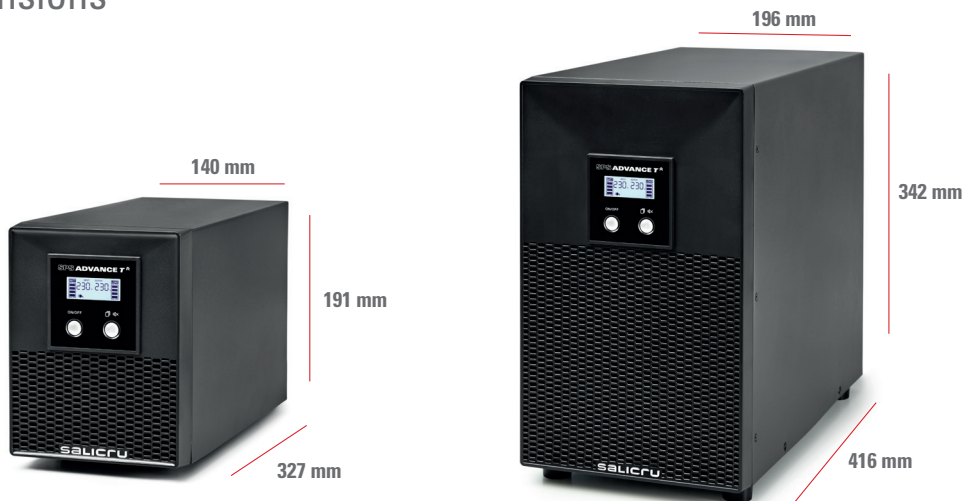


Range

MODEL	CODE	POWER (VA / W)	NO. OF OUTPUT SOCKETS	DIMENSIONS (D × W × H mm)	WEIGHT (Kg)
SPS 850 ADV T	6A0EA000001	850 / 595	6 × IEC C13	327 × 140 × 191	11.25
SPS 1000 ADV T	6A0EA000002	1000 / 700	6 × IEC C13	327 × 140 × 191	11.36
SPS 1500 ADV T	6A0EA000003	1500 / 1050	6 × IEC C13	327 × 140 × 191	13.31
SPS 2000 ADV T	6A0EA000004	2000 / 1400	6 × IEC C13	327 × 140 × 191	14.18
SPS 3000 ADV T	6A0EA000005	3000 / 2100	4 × IEC C13 + terminals	416 × 196 × 342	29.68

Dimensions and weights for devices with standard backup

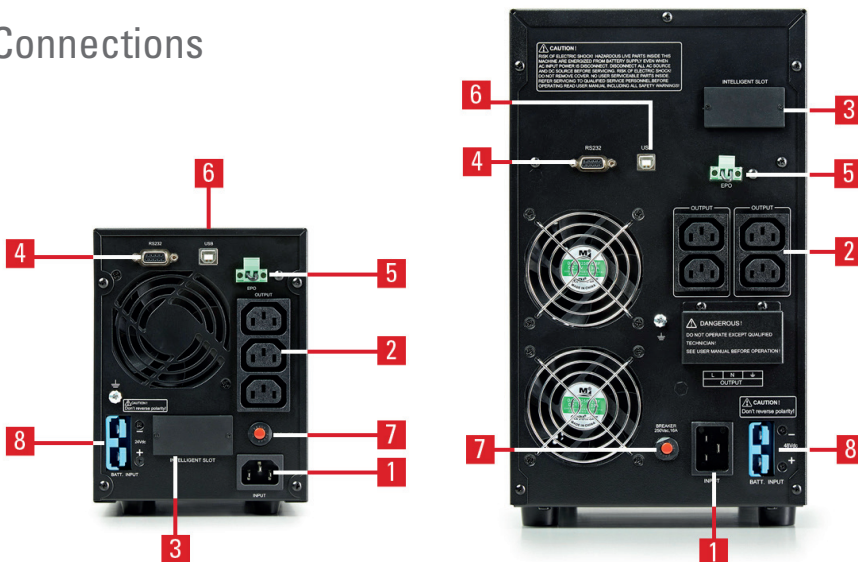
Dimensions



SPS 850-2000 ADV T

SPS 3000 ADV T

Connections



SPS 850-2000 ADV T

SPS 3000 ADV T

1. Socket input.
2. Socket IEC output.
3. Intelligent slot for SNMP/web adapter.
4. RS-232 interface.
5. Emergency stop (EPO).
6. USB interface.
7. Thermal rearmable input.
8. Connection for battery module (only in models with extra charger).

Technical specifications

MODEL		SPS ADVANCE T
TECHNOLOGY		Line-interactive
FORMAT		Tower
INPUT	Rated voltage	230 V
	Voltage range 100% load	165 ÷ 290 V
	Stabiliser	AVR (Buck & Boost)
	Rated frequency	50 / 60 Hz (auto-detection)
	Frequency range	±5 Hz
	Protection	Resettable breaker
OUTPUT	Rated voltage	230 V
	Voltage accuracy (battery mode)	±10%
	Total harmonic distortion (THDv)	<5%
	Waveform (battery mode)	Pure sine wave
	Frequency	50/60 Hz (same as input)
	Frequency accuracy (battery mode)	±1 Hz
	Compatibility with APFC loads	Yes ⁽¹⁾
	Performance Stabiliser mode (AVR)	>92%
	Performance Battery mode	>80%
	Admissible overloads in battery mode	110% for 1 min / >130% immediate
	Admissible overloads in-line mode	110% 1min / 120% immediate
	Socket type	IEC C13
BATTERY	Battery type	Pb-Ca sealed, AGM, maintenance-free
	Charge type	I/U (constant current/constant voltage)
	Recharge time	4 hours to 90%
	Battery test	Automatic on each start-up + manual
COMMUNICATION	Ports	RS-232 / USB (HID)
	Intelligent slot	Slot for SNMP/potential-free contacts/ MODBUS
	Monitoring software	For Windows, Linux and Mac
INDICATIONS	Type	LCD + keypad
	Values	Input and output voltage / % load / % battery / backup
	Levels	Connected load / overload / battery / low battery
	Alarm	Battery / low battery / overload / failure
OTHER FUNCTIONS	Cold start (start-up from batteries)	Yes
	Emergency stop (EPO)	Yes
GENERAL	Operating temperature	0° C ÷ 40° C
	Relative humidity	Up to 95%, non-condensing
	Maximum operating altitude	2,400 masl
	Acoustic noise at 1 metre	<45 dB ⁽²⁾
STANDARDS	Safety	EN-IEC 62040-1
	Electromagnetic compatibility (EMC)	EN 62040-2
	Operation	EN 62040-3
	Quality and environmental management	ISO 9001 & ISO 14001

(1) Power degradation of 20%

(2) <50 dB for 3000 VA mode

Information subject to change without notice.



@salicru_en



www.linkedin.com/company/salicruen/